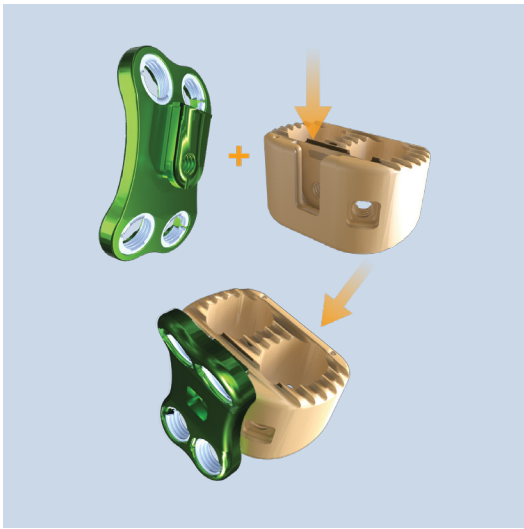




# Idys<sup>®</sup> - ALIF

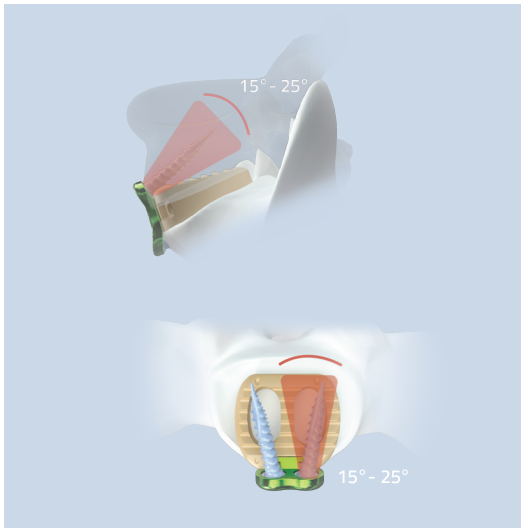
---

PEEK



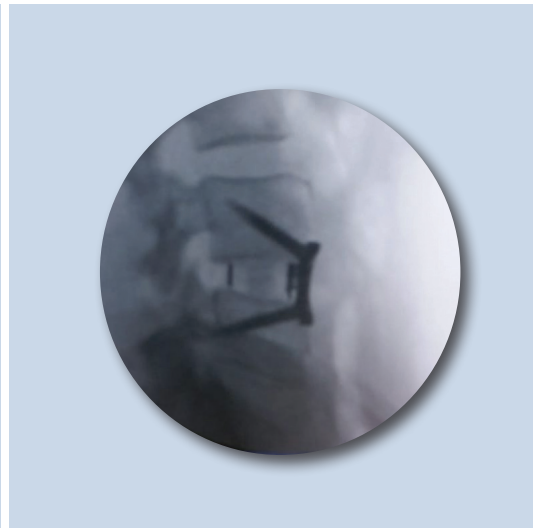
**CAGE/PLATE ASSEMBLY**

Provides excellent stability upon insertion.



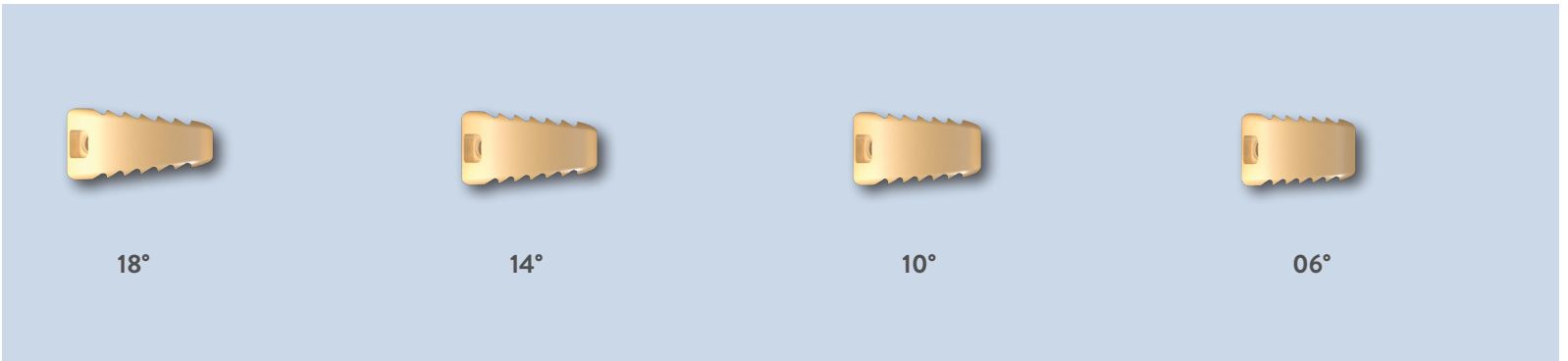
**ANGULAR VARIABILITY**

Allows for strong anterior fixation.



**LOW PLATE PROFILE**

Option to reduce the profile of the plate.



**AVAILABLE LORDOSIS**

**SIZES\***

**Idys - ALIF**



**CAGES (PEEK)**

Footprint: Width x Depth x Height

- 24 x 26mm x H 10 - 12 - 14 - 16 - 18mm
- 26 x 32mm x H 10 - 12 - 14 - 16 - 18mm
- 30 x 35mm x H 10 - 12 - 14 - 16 - 18mm
- 30 x 40mm x H 10 - 12 - 14 - 16 - 18mm



**PLATES**

Footprint: Height

- H 10mm
- H 12mm
- H 14mm
- H 16mm
- H 18mm



**SCREWS**

Footprint: Length

- L 20mm
- L 25mm
- L 30mm
- L 35mm

*Prior to using any Clariance device, please review the instructions for use and surgical technique for a complete listing of indications, contraindications, warnings, precautions, potential adverse events, and directions for use.*

**Clariance**, 18 Rue Robespierre 62217 Beaurains France • T : +33 3 21 16 12 15 F : +33 3 21 15 50 73 • [contact@clariance-spine.com](mailto:contact@clariance-spine.com)  
**Clariance, Inc** 4809 N. Ravenswood Ave Suite 119 Chicago, IL 60640 • T : 773-868-7041 F : 773-868-7043 • [contact@clariance-spine.us](mailto:contact@clariance-spine.us)



*\*Product availability may vary upon markets.*

09/2019 Clariance, Inc All rights reserved. Clariance is a registered trademark licensed by Clariance, Inc. Idys is a trademark licensed by Clariance Inc - 24FLY01